

SporeGen Ltd  
Bourne Laboratories  
Royal Holloway, University of London  
Egham, Surrey  
TW20 0EX, UK



Tel: +44-(0)1784-443760  
Mob: +44 (0)7733-425024  
Email: info@sporegen.com  
www.sporegen.com

## Product Data Sheet

CODE	NAME
SPG02	Polyclonal antibodies (rabbit) raised against purified spores of <i>Clostridium difficile</i> strain 630 (ribotype 012)

DETAILS	
Description	Polyclonal antibodies to <i>Clostridium difficile</i> 630 spore antigen
Host	Rabbit
Isotype	IgG
Class	Polyclonal
Type	Antibody
Tested species reactivity	Bacteria
Immunogen	Spores of <i>Clostridium difficile</i> 630 (ribotype 012)

TESTED APPLICATIONS	DILUTION*
ELISA	1:1000 – 1:2000
Western Blot	1:1000 – 1:2000

\* Suggested working dilutions are given as a guide only. The user is recommended to titrate the product for use in their own experiment using appropriate negative and positive controls.

FORM INFORMATION	
Form	Liquid
Volume	250 µl
Concentration	500 µg at 2 mg/ml
Purity	Protein A purified
Storage buffer	PBS, pH 7,4
Preservative	0.05 % sodium azide
Precaution of use	This product contains sodium azide: a POISONOUS AND HAZARDOUS SUBSTANCE which should be handled by trained staff only.
Storage instructions	Shipped at 4°C. Upon delivery aliquot and store at -20°C. Avoid freeze / thaw cycles.
Storage comments	The antibody is stable at 2-8°C for up to 1 month. For long term storage, aliquot the antibody and store at -20°C or below. Avoid repeated freeze-thaw cycles.

## Quality control results

Antibodies: rabbit anti-*C. difficile* 630 spore polyclonal antibody (SPG02)

### 1) Assay: Indirect ELISA

Coated antigens: A: *C. difficile* 630 spores  
B: *B. subtilis* spores (negative control)

Coating concentration:  $10^8$  spores/ml

Volume per well: 50µl

Coating buffer: Phosphate Buffered Saline, pH 7.4

Secondary antibody: anti-Rabbit IgG (A9169, Sigma), dilution 1:8000

*Table 1. ELISA results for anti-C. difficile 630 spore polyclonal antibody*

<b>Dilution</b>	<b>A</b>	<b>B</b>
1:1000	1.303	0.132
1:2000	1.034	0.116
1:4000	0.832	0.117
1:8000	0.670	0.115
1:16000	0.484	0.130
1:32000	0.348	0.131
1:64000	0.286	0.147
1:128000	0.246	0.138
1:256000	0.218	0.132
blank	0.203	0.103
Titer:	1:16000	<1:1000

Starting dilution: 1:1000 (equivalent to 2 µg/ml)

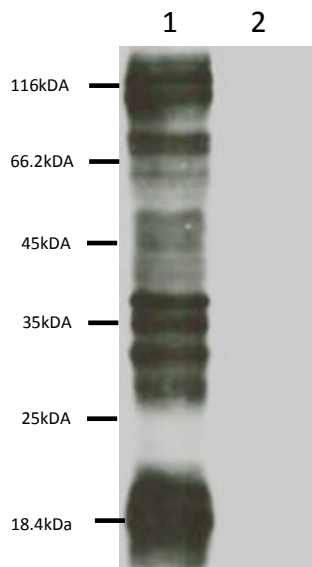
The titer is the highest dilution with S/B (Signal/Blank)≥2.1

2) Assay: Western blotting

Tested antigens:       1       spore coat extract of *C. difficile* 630  
                          2       spore coat extract of *B. subtilis* (negative control)

Primary antibody:     rabbit anti-*C. difficile* 630 spore polyclonal antibody (SPG02), dilution 1:1000

Secondary antibody:  anti-Rabbit IgG (A9169, Sigma), dilution 1:5000



Lane 1: spore coat protein extract of *C. difficile* 630

Lane 2: spore coat protein extract of *B. subtilis* (negative control)

Figure 1. Western blot for spore coat proteins