

SporeGen Ltd
Bourne Laboratories
Royal Holloway, University of London
Egham, Surrey
TW20 0EX, UK

Tel: +44-(0)1784-443760
Mob: +44 (0)7733-425024
Email: info@sporegen.com
www.sporegen.com



Product Data Sheet

CODE	NAME
SPG01	Polyclonal antibodies (rabbit) raised against purified spores of <i>Clostridium difficile</i> strain R20291 (ribotype 027)

DETAILS	
Description	Polyclonal antibodies to <i>Clostridium difficile</i> R20291 spore antigen
Host	Rabbit
Isotype	IgG
Class	Polyclonal
Type	Antibody
Tested species reactivity	Bacteria
Immunogen	Spores of <i>Clostridium difficile</i> R20291 (ribotype 027)

TESTED APPLICATIONS	DILUTION*
ELISA	1:1000 – 1:2000
Western Blot	1:1000 – 1:2000

* Suggested working dilutions are given as a guide only. The user is recommended to titrate the product for use in their own experiment using appropriate negative and positive controls.

FORM INFORMATION	
Form	Liquid
Volume	250 µl
Concentration	500 µg at 2 mg/ml
Purity	Protein A purified
Storage buffer	PBS, pH 7,4
Preservative	0.05 % sodium azide
Precaution of use	This product contains sodium azide: a POISONOUS AND HAZARDOUS SUBSTANCE which should be handled by trained staff only.
Storage instructions	Shipped at 4°C. Upon delivery, aliquot and store at -20°C. Avoid freeze / thaw cycles.
Storage comments	The antibody is stable at 2-8°C for up to 1 month. For long term storage, aliquot the antibody and store at -20°C or below. Avoid repeated freeze-thaw cycles.

Quality control results

Antibodies: rabbit anti-*C. difficile* R20291 spore polyclonal antibody (SPG01)

1) Assay: Indirect ELISA

Coated antigens: A: *C. difficile* R20291 spores
B: *Bacillus subtilis* spores (negative control)

Coating concentration: 10^8 /ml

Volume per well: 50µl

Coating buffer: Phosphate Buffered Saline, pH 7.4

Secondary antibody: anti-Rabbit IgG (A9169, Sigma), dilution 1:8000

Table 1. ELISA results for anti-*C. difficile* R20291 spore polyclonal antibody

Dilution	A	B
1:1000	1.493	0.140
1:2000	1.165	0.115
1:4000	0.776	0.142
1:8000	0.514	0.110
1:16000	0.304	0.124
1:32000	0.234	0.121
1:64000	0.183	0.127
1:128000	0.171	0.136
1:256000	0.152	0.302
blank	0.142	0.103
Titer:	1:16000	<1:1000

Starting dilution: 1:1000 (equivalent to 2 µg/ml)

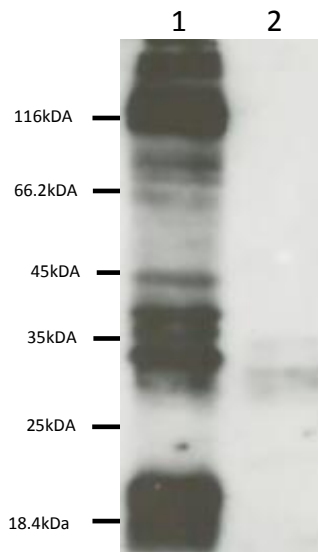
The titer is the highest dilution with S/B (Signal/Blank) ≥ 2.1

2) Assay: Western blotting

Tested antigens: 1 spore coat extract of *C. difficile* R20291
 2 spore coat extract of *B. subtilis* (negative control)

Primary antibody: rabbit anti-*C. difficile* R20291 spore polyclonal antibody (SPG01), dilution 1:1000

Secondary antibody: anti-Rabbit IgG (A9169, Sigma), dilution 1:5000



Lane 1: spore coat protein extract of *C. difficile* R20291

Lane 2: spore coat protein extract of *B. subtilis* (negative control)

Figure 1. Western blot for spore coat proteins